

Encode[®] Empowered

Convenience & Quality in Just One Transitional Abutment

Crane Dental Laboratory is proud to be an Encode[®] Empowered laboratory, which allows us to offer expertly designed OEM abutments. Through this BellaTek[™] Encode[®] program, our team scans and controls the design of their CAD/CAM abutments. This control results in a faster turnaround and a simplified workflow.

BENEFITS:

- ✓ Scanned & Designed by Crane Experts
- ✓ Simplified Impressions
- ✓ No Need for Impression Copings
- ✓ Reduced Visits
- ✓ Superior Implant Esthetics

*Package price dependent on BellaChek[®] voucher. Package includes full-contour zirconia crown, soft tissue model, and analog.



Package price includes full-contour zirconia crown, soft tissue model, and analog.

Prescribe Encode[®] Abutments Today!

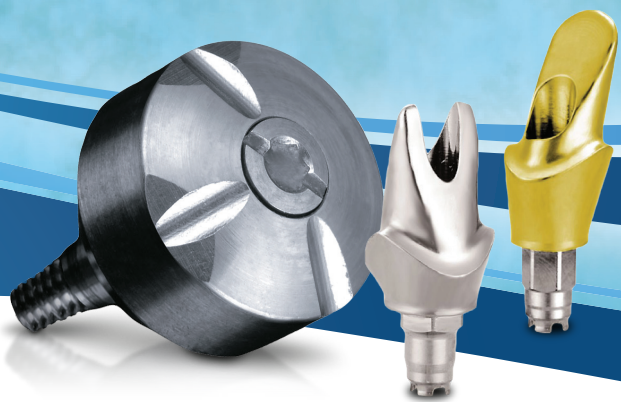
To get started, visit www.CraneDentalLab.com or contact our team at 585.730.5100 or info@cranedentallab.com.

See back for details on how to save.

3515 Buffalo Road • Rochester, New York 14624

Phone 585.730.5100 • Toll Free 866.311.3731 • Fax 585.730.5095

cranedentallab.com



How to Save with BellaChek® Vouchers

When prescribing an Encode® Abutment package, please present a BellaChek® voucher to receive the \$269 price.

- ✓ **À LA CARTE**
Purchase BellaChek® vouchers individually for \$150 per voucher.
- ✓ **BULK**
Purchase BellaChek® vouchers in bulk at a discounted rate.

Quantity	Price
12	\$1,500
25	\$3,000
45	\$5,250

- ✓ **STACKED**
Purchase a BellaTek™ implant, Encode® healing collar, and a BellaChek® voucher at one set price. Stacked vouchers can be purchased in bulk at a discounted rate.

Contact Your BellaTek™ Representative to Purchase Your BellaChek® Vouchers.